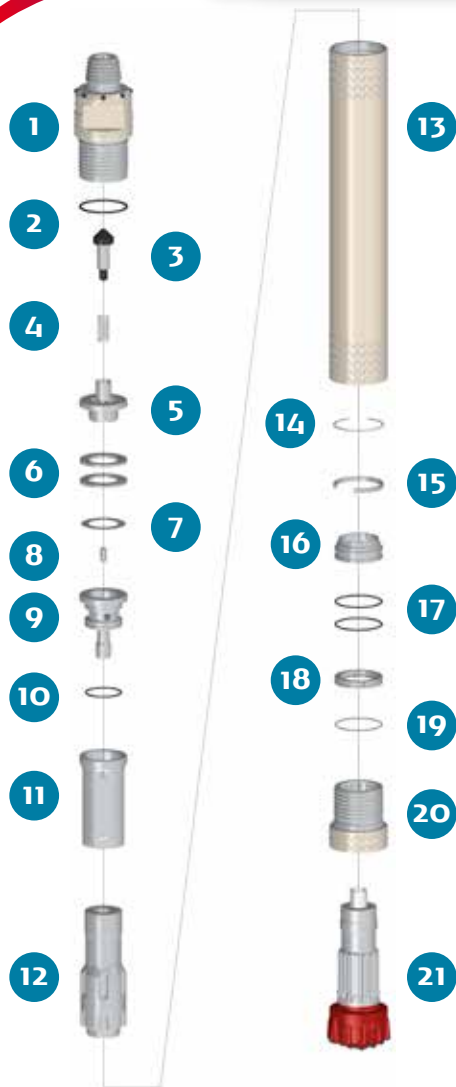


PUMA 8.1 B Kit - QL 8

HAMMER TYPE / HDWR (Heavy Duty Welding with Retractable Backhead) CODE / 0001080-050026



SPARE PARTS

ITEM / DESCRIPTION	kg /	lb	CODE
1 HDWR Backhead 4 1/2" Beco Pin ⁽¹⁾	43.2	95.1	0106080-010000
2 Backhead O'Ring	0.0	0.0	C180010-002434
3 Check Valve Dart	0.8	1.8	0101080-030000
4 Spring	0.1	0.1	0101080-040000
5 Air Distributor	4.3	9.5	0101080-050000
6 Compression Disk (Qty:2)	1.5	3.3	0106080-060000
7 Make Up Ring Shim ⁽²⁾	0.1	0.1	0101080-180000
8 Choke ⁽³⁾	0.0	0.0	0101080-070000
9 Air Guide	6.7	14.7	0101080-080000
10 Air Guide O'Ring	0.0	0.0	C180010-002347
11 Cylinder	9.5	20.9	0101080-100000
12 Piston QL 8	34.9	76.8	0101080-120005
13 HDW Wear Sleeve	75.5	166.1	0106080-110000
14 Piston Retainer Ring	0.1	0.1	0101080-190000
15 Flat Stop Ring B Kit	0.3	0.7	0101080-190002
16 Bit Guide B Kit QL 8	2.2	4.7	0101080-140001
17 Bit Guide O'Ring (Qty:2)	0.0	0.0	C180010-002358
18 Bit Retainer B Kit QL 8	1.3	2.8	0101080-150004
19 Bit Retainer O'Ring	0.0	0.0	C180010-002162
20 HDW Chuck B Kit QL 8	12.2	26.8	0101080-170027
21 Bit QL 8	-	-	-

(1) Other thread types can be delivered at request.

(2) Not installed in new hammers.

(3) Open plugs are available.

HDW: Heavy Duty Welding; HDWR: HDW with retractile backhead.

GENERAL DESCRIPTION

NET WEIGHT		OUTSIDE DIAMETER		HAMMER LENGTH		HAMMER LENGTH WITH BIT			
kg	lb	mm	in	mm	in	CLOSED BIT		EXTENDED BIT	
						mm	in	mm	in
193	424	188	7.4	1308	51.5	1465	57.7	1513	59.6

AIR CONSUMPTION												
PRESSURE	psig	150	200	250	300	350	barg	10.3	13.8	17.2	20.7	24.1
VOLUME	SCFM	530	735	950	1170	1390	m ³ /min	15.0	20.8	26.9	33.1	39.3