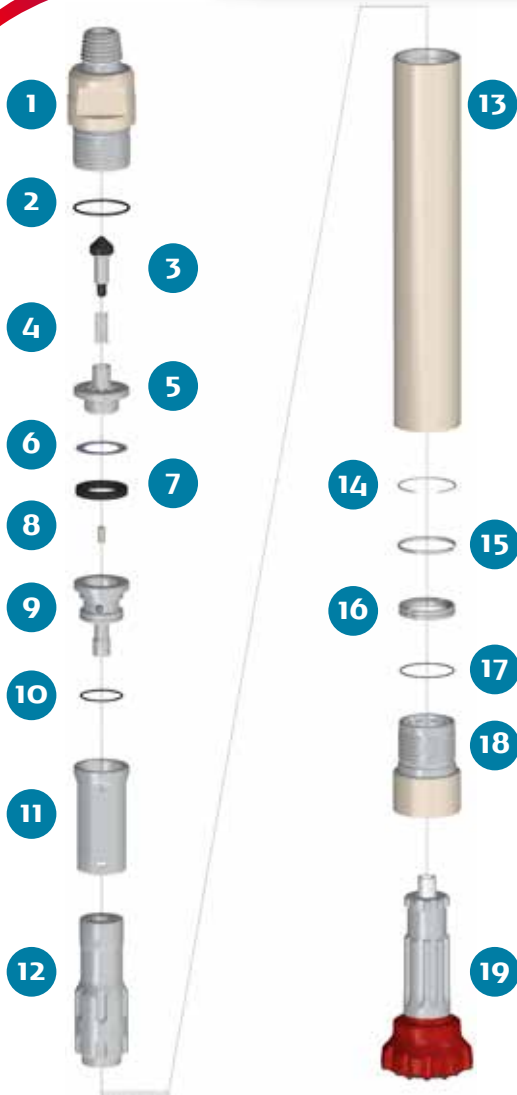


PUMA 8.1 DHD 380

HAMMER TYPE / S (Standard) CODE / 0001080-000015



SPARE PARTS

ITEM / DESCRIPTION	kg	lb	CODE
1 Backhead 4 1/2" Beco. Pin ⁽¹⁾	40.8	89.8	0101080-010000
2 Backhead O'Ring	0.0	0.0	C180010-002434
3 Check Valve Dart	0.9	2.1	0101080-030000
4 Spring	0.1	0.1	0101080-040000
5 Air Distributor	4.3	9.5	0101080-050000
6 Make Up Ring Shim ⁽²⁾	0.1	0.1	0101080-180000
7 Make up Ring	0.2	0.4	0101080-060000
8 Choke ⁽³⁾	0.0	0.0	0101080-070000
9 Air Guide	6.7	14.7	0101080-080000
10 Air Guide O'Ring	0.0	0.0	C180010-002347
11 Cylinder	9.5	20.9	0101080-100000
12 Piston DHD 380	35.3	77.7	0101080-120004
13 Wear Sleeve	61.0	133.8	0101080-110000
14 Piston Retainer Ring	0.1	0.1	0101080-190000
15 Flat Stop Ring	0.2	0.4	0101080-130000
16 Bit Retainer DHD 380	1.4	3.1	0101080-150002
17 Bit Retainer O'Ring	0.0	0.0	C180010-002255
18 Chuck DHD 380	18.8	41.3	0101080-170009
19 Bit DHD 380	-	-	-

(1) Other thread types can be delivered at request.
 (2) Not installed in new hammers.
 (3) Open plugs are available.

GENERAL DESCRIPTION

NET WEIGHT		OUTSIDE DIAMETER		HAMMER LENGTH		HAMMER LENGTH WITH BIT			
kg	lb	mm	in	mm	in	CLOSED BIT		EXTENDED BIT	
179	395	180	7.08	1305	51.4	1434	56.5	1485	58.5

AIR CONSUMPTION

PRESSURE	psig	150	200	250	300	350	barg	10.3	13.8	17.2	20.7	24.1
VOLUME	SCFM	530	735	950	1170	1390	m ³ /min	15.0	20.8	26.9	33.1	39.3