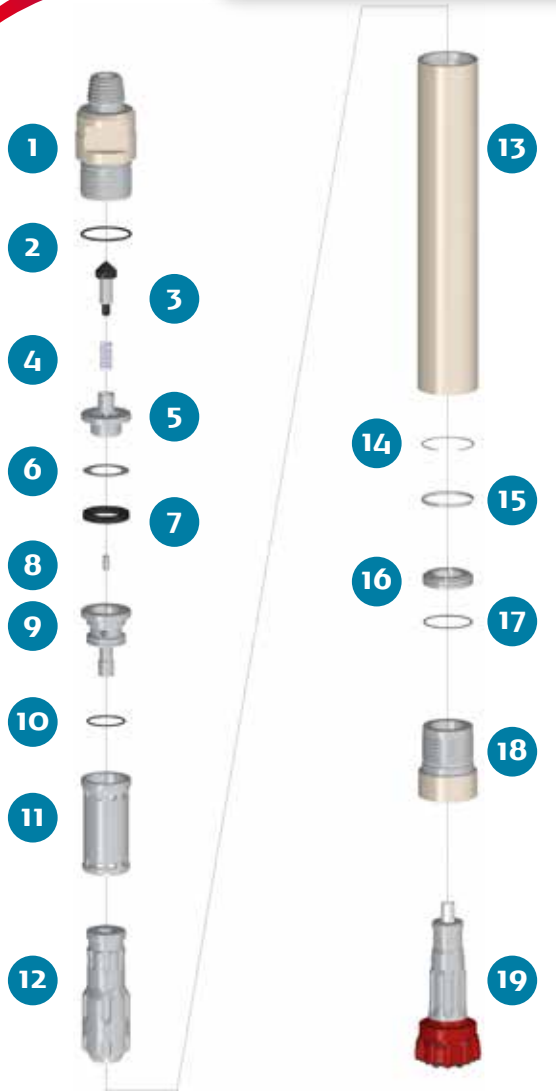


# PUMA 8.1 SD 8

HAMMER TYPE / S WA (Standard) CODE / 0001080-000013



## SPARE PARTS

ITEM / DESCRIPTION	kg / lb		CODE
1 Backhead 4 1/2" Reg. Pin <sup>(1)</sup>	40.8	89.8	0101080-010000
2 Backhead O'Ring	0.0	0.0	C180010-002434
3 Check valve dart	0.9	2.1	0101080-030000
4 Spring	0.1	0.1	0101080-040000
5 Air Distributor	4.3	9.5	0101080-050000
6 Make up Ring Shim <sup>(2)</sup>	0.1	0.1	0101080-180000
7 Make up Ring	0.2	0.4	0101080-060000
8 Choke <sup>(3)</sup>	0.0	0.0	0101080-070000
9 Air Guide	6.7	14.7	0101080-080000
10 Air Guide O'Ring	0.0	0.0	C180010-002347
11 Water Cylinder <sup>(4)</sup>	8.1	17.9	0101080-100001
12 Water Piston SD 8 <sup>(4)</sup>	34.5	76.0	0101080-120003
13 Wear Sleeve	61.0	133.8	0101080-110000
14 Piston Retainer Ring	0.1	0.1	0101080-190000
15 Flat Stop Ring	0.2	0.4	0101080-130000
16 Bit Retainer SD 8	2.3	5.1	0101080-150001
17 Bit Retainer O'Ring	0.0	0.0	C180010-002255
18 Chuck SD 8	19.0	41.8	0101080-170003
19 Bit SD 8	-	-	-

(1) Other thread types can be delivered at request.  
 (2) Not installed in new hammers.  
 (3) Open plugs are available.  
 (4) Adapted to work under water (WA).

## GENERAL DESCRIPTION

NET WEIGHT		OUTSIDE DIAMETER		HAMMER LENGTH		HAMMER LENGTH WITH BIT			
						CLOSED BIT		EXTENDED BIT	
kg	lb	mm	in	mm	in	mm	in	mm	in
179	394	180	7.08	1272	50.1	1401	55.2	1452	57.2

AIR CONSUMPTION												
PRESSURE	psig	150	200	250	300	350	barg	10.3	13.8	17.2	20.7	24.1
VOLUME	SCFM	530	735	950	1170	1390	m <sup>3</sup> /min	15.0	20.8	26.9	33.1	39.3