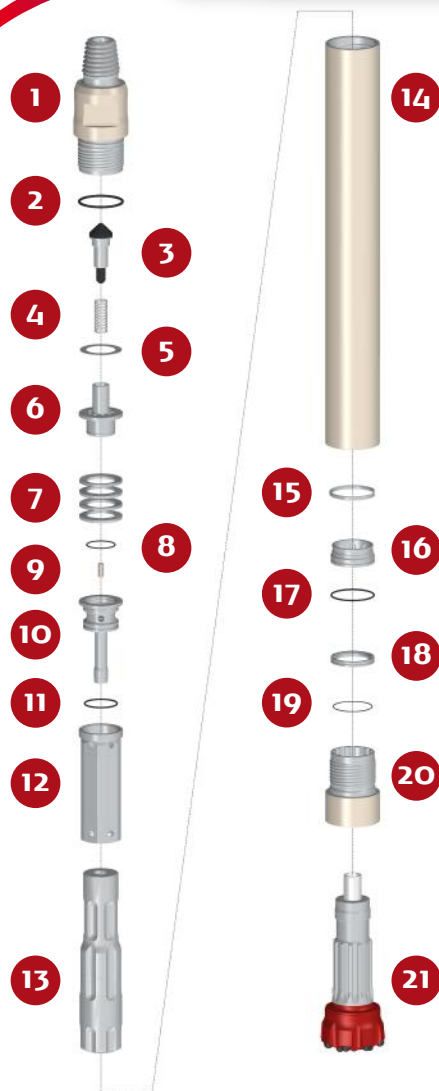


PUMA M5.2 HV QL 5

HAMMER TYPE / HD (Heavy Duty) CODE / 0006050-010007



SPARE PARTS

ITEM / DESCRIPTION	kg /	lb	CODE
1 HD Backhead 3 1/2" API Reg. Pin ⁽¹⁾	11.7	25.8	0106050-010003
2 Backhead O'Ring	0.0	0.0	C180010-002341
3 Check Valve Dart	0.4	0.9	0101050-030000
4 Spring	0.1	0.1	0101050-040000
5 Make Up Ring Shim ⁽²⁾	0.1	0.1	0101050-180000
6 Air Distributor	1.2	2.6	0106050-050000
7 Compression Disk (Qty.4)	0.7	1.5	0106050-060000
8 Air Distributor O'Ring	0.0	0.0	C180010-002141
9 Choke ⁽³⁾	0.0	0.0	0101050-070000
10 Air Guide	1.7	3.8	0106050-080001
11 Air Guide O'Ring	0.0	0.0	C180010-002231
12 Cylinder	2.7	6.0	0106050-100000
13 HV Piston QL 5	13.9	30.6	0106050-120013
14 HD Wear Sleeve	28.4	62.4	0106050-110006
15 Piston Retainer Ring	0.2	0.4	0106050-140000
16 Bit Guide QL 5	0.6	1.3	0106050-200002
17 Bit Guide O'Ring	0.0	0.0	C180010-002238
18 Bit Retainer QL 5	0.2	0.4	0106050-150004
19 Bit Retainer O'Ring	0.0	0.0	C180010-002042
20 HD Chuck QL 5	3.5	7.7	0106050-170011
21 Bit QL 5	-	-	-

(1) Other thread types can be delivered at request.
 (2) Not installed in new hammers.
 (3) Different Choke size are available.
 HV High consumption.
 HD Heavy Duty.

GENERAL DESCRIPTION

NET WEIGHT		OUTSIDE DIAMETER		HAMMER LENGTH		HAMMER LENGTH WITH BIT			
						CLOSED BIT		EXTENDED BIT	
kg	lb	mm	in	mm	in	mm	in	mm	in
65	144	118	4.64	1073	42.2	1178	46.3	1213	47.7

AIR CONSUMPTION												
PRESSURE	psig	150	200	250	300	350	barg	10.3	13.8	17.2	20.7	24.1
VOLUME	SCFM	328	471	614	757	900	m ³ /min	9.3	13.3	17.4	21.4	25.4

Check. 09/2016