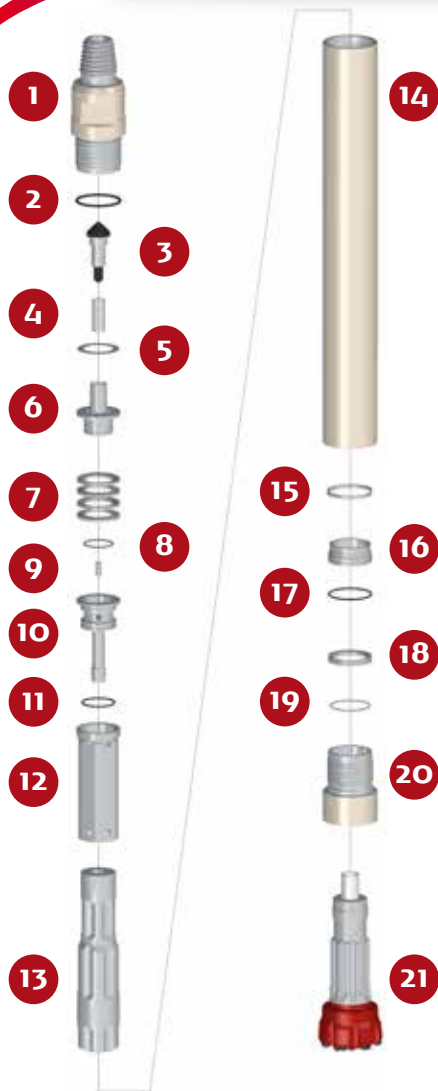


PUMA M5.2 QL 5

HAMMER TYPE / S (Standard) CODE / 0006050-000008



SPARE PARTS

ITEM / DESCRIPTION	kg	lb	CODE
2 Backhead 3 1/2" API Reg. Pin ⁽¹⁾⁽²⁾	11.6	25.6	0106050-010001
2 Backhead O'Ring	0.0	0.0	C180010-002341
3 Check Valve Dart	0.4	0.9	0101050-030000
4 Spring	0.1	0.1	0101050-040000
5 Make Up Ring Shim ⁽³⁾	0.1	0.1	0101050-180000
6 Air Distributor	1.2	2.6	0106050-050000
7 Compression Disk (Qty.4)	0.7	1.5	0106050-060000
8 Air Distributor O'Ring	0.0	0.0	C180010-002141
9 Choke ⁽⁴⁾	0.0	0.0	0101050-070000
10 Air Guide	1.7	3.8	0106050-080001
11 Air Guide O'Ring	0.0	0.0	C180010-002231
12 Cylinder	2.7	6.0	0106050-100000
13 Piston QL 5	14.1	31.1	0106050-120010
14 Wear Sleeve	23.8	52.4	0106050-110005
15 Piston Retainer Ring	0.2	0.4	0106050-140000
16 Bit Guide QL 5	0.6	1.3	0106050-200002
17 Bit Guide O'Ring	0.0	0.0	C180010-002238
18 Bit Retainer QL 5	0.2	0.4	0106050-150004
19 Bit Retainer O'Ring	0.0	0.0	C180010-002042
20 Chuck QL 5	3.2	7.0	0106050-170010
21 Bit QL 5	-	-	-

(1) Other thread types can be delivered at request.
 (2) With retractile inserts (ø123 mm-4.8" between inserts).
 (3) Not installed in new hammers.
 (4) Open plugs are available.

GENERAL DESCRIPTION

NET WEIGHT		OUTSIDE DIAMETER		HAMMER LENGTH		HAMMER LENGTH WITH BIT			
						CLOSED BIT		EXTENDED BIT	
kg	lb	mm	in	mm	in	mm	in	mm	in
61	134	115 ⁽²⁾	4.52 ⁽²⁾	1073	42.2	1178	46.3	1213	47.7

AIR CONSUMPTION												
PRESSURE	psig	150	200	250	300	350	bar _g	10.3	13.8	17.2	20.7	24.1
VOLUME	SCFM	310	425	542	660	775	m ³ /min	8.8	12.0	15.4	18.7	22.0