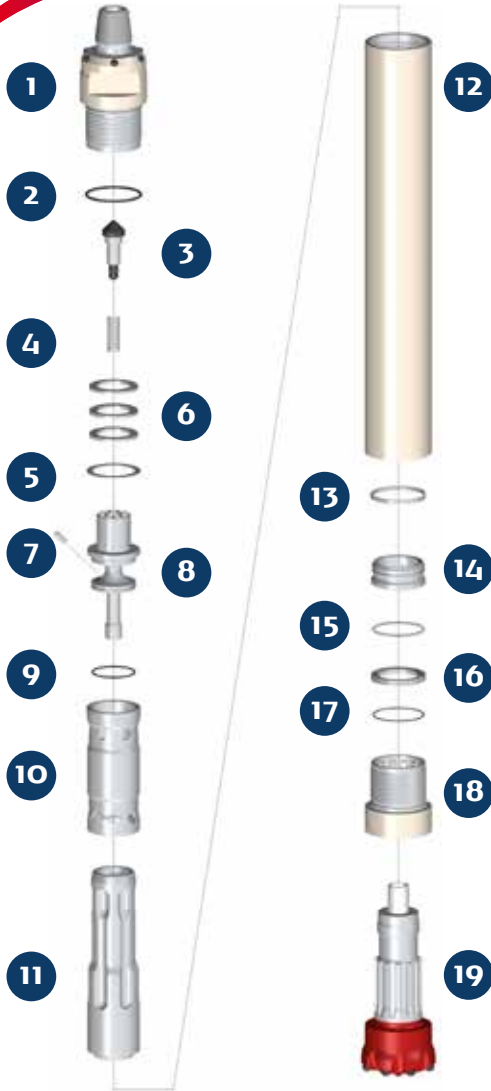


PUMA M6.2 EX QL 6

HAMMER TYPE / HDR (Heavy Duty with Retractable Backhead) CODE / 0006060-040008



SPARE PARTS

| ITEM / DESCRIPTION | kg / | lb | CODE |
|--|-------|-------|----------------|
| 1 HDR Backhead 3 1/2" Req. Pin ⁽¹⁾ | 18.20 | 40.10 | 0106060-010069 |
| 2 Backhead O'Ring | 0.01 | 0.02 | C180010-002349 |
| 3 Check Valve Dart | 0.60 | 1.32 | 0101050-030000 |
| 4 Check Valve Spring | 0.06 | 0.12 | 0101060-040000 |
| 5 Make Up Ring Shim ⁽²⁾ | 0.06 | 0.12 | 0101060-180000 |
| 6 Compression Disk (Qty:3) | 0.70 | 1.56 | 0106060-060003 |
| 7 Choke ⁽³⁾ | 0.01 | 0.02 | 0101050-070000 |
| 8 Air Guide | 4.36 | 9.59 | 0106060-080002 |
| 9 Air Guide O'Ring | 0.01 | 0.02 | C180010-002238 |
| 10 Cylinder | 4.38 | 9.36 | 0106060-100003 |
| 11 Piston QL 6 | 22.28 | 49.01 | 0106060-120009 |
| 12 HD-3E Wear Sleeve | 41.80 | 92.00 | 0106060-110025 |
| 13 Piston Retainer Ring | 0.11 | 0.24 | 0101060-130001 |
| 14 Bit Guide QL 6 | 1.42 | 3.13 | 0106060-140006 |
| 15 Bit Guide O'Ring | 0.01 | 0.01 | C180010-002346 |
| 16 Bit Retainer QL 6 | 0.44 | 0.96 | 0106060-150004 |
| 17 Bit Retainer O'Ring | 0.01 | 0.01 | C180010-002156 |
| 18 HD-3E Chuck Bit QL 6 | 6.20 | 13.60 | 0106060-170054 |
| 19 Bit QL 6 | - | - | - |

(1) Other thread types can be delivered at request.

(2) Not installed in new hammers.

(3) Open plugs are available.

HD: Heavy Duty.

3E=3 entries Thread.

GENERAL DESCRIPTION

| NET WEIGHT | | OUTSIDE DIAMETER | | HAMMER LENGTH | | HAMMER LENGTH WITH BIT | | | | | | | |
|------------|------|------------------|------|---------------|------|------------------------|------|---------------------|------|-----|------|------|------|
| kg | lb | mm | in | mm | in | CLOSED BIT | | EXTENDED BIT | | | | | |
| 101 | 222 | 146.5 | 5.76 | 1098 | 43.2 | mm | in | mm | in | | | | |
| | | | | | | 1201 | 47.2 | 1241 | 48.8 | | | | |
| PRESSURE | psig | 100 | 150 | 200 | 250 | 300 | 350 | barg | 5 | 10 | 15 | 20 | 25 |
| VOLUME | SCFM | 196 | 336 | 475 | 615 | 755 | 895 | m ³ /min | 3.3 | 9.1 | 14.8 | 20.5 | 26.2 |