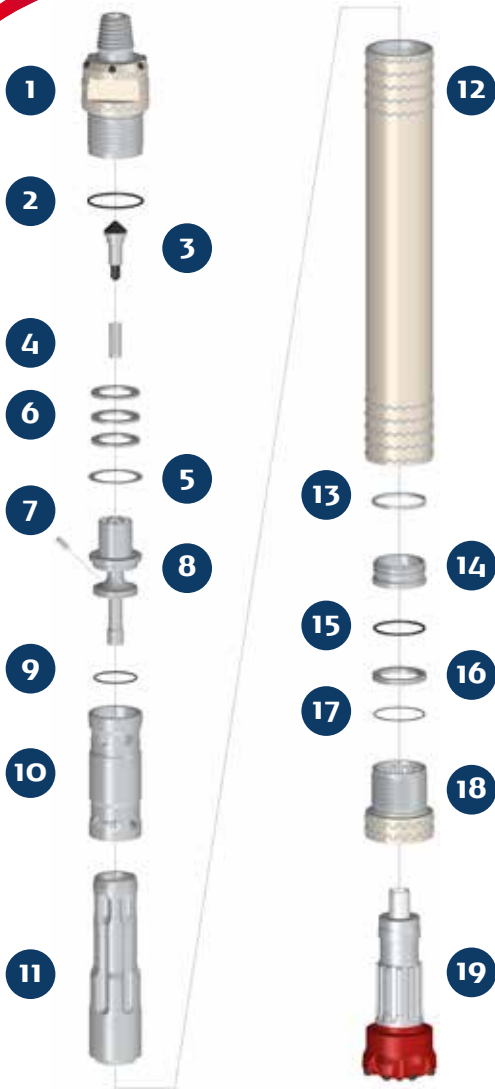


# PUMA M6.2 EX QL 6

HAMMER TYPE / HDWR (Heavy Duty Welding with Retractable Backhead) CODE / 0006060-090015



## SPARE PARTS

ITEM / DESCRIPTION	kg /	lb	CODE
1 HDWR-3E Backhead 3 1/2" Reg. Pin <sup>(1)</sup>	18.70	41.11	0106060-010063
2 Backhead O'Ring	0.01	0.02	C180010-002349
3 Check Valve Dart	0.60	1.32	0101050-030000
4 Check Valve Spring	0.06	0.12	0101060-040000
5 Make Up Ring Shim <sup>(2)</sup>	0.06	0.12	0101060-180000
6 Compression Disk (Qty:3)	0.70	1.56	0106060-060003
7 Choke <sup>(3)</sup>	0.01	0.02	0101050-070000
8 Air Guide	4.36	9.59	0106060-080002
9 Air Guide O'Ring	0.01	0.02	C180010-002238
10 Cylinder	4.38	9.36	0106060-100003
11 Piston QL 6	22.28	49.01	0106060-120009
12 HDW-3E Wear Sleeve	41.00	90.20	0106060-110023
13 Piston Retainer Ring	0.11	0.24	0101060-130001
14 Bit Guide QL 6	1.42	3.13	01060601-40006
15 Bit Guide O'Ring	0.01	0.01	C180010-002346
16 Bit Retainer QL 6	0.44	0.96	0106060-150004
17 Bit Retainer O'Ring	0.01	0.01	C180010-002156
18 HDW-3E Chuck QL 6	7.00	15.40	0106060-170051
19 Bit QL 6	-	-	-

(1) Other thread types can be delivered at request.

(2) Not installed in new hammers.

(3) Open plugs are available.

HDW: Heavy Duty Welding.

3E = 3 Entries thread.

## GENERAL DESCRIPTION

NET WEIGHT		OUTSIDE DIAMETER		HAMMER LENGTH		HAMMER LENGTH WITH BIT			
kg	lb	mm	in	mm	in	CLOSED BIT		EXTENDED BIT	
101	222	149.5	5.88	1098	43.2	1201	47.2	1241	48.8

AIR CONSUMPTION													
PRESSURE	psig	100	150	200	250	300	350	barg	5	10	15	20	25
VOLUME	SCFM	196	336	475	615	755	895	m <sup>3</sup> /min	3.3	9.1	14.8	20.5	26.2