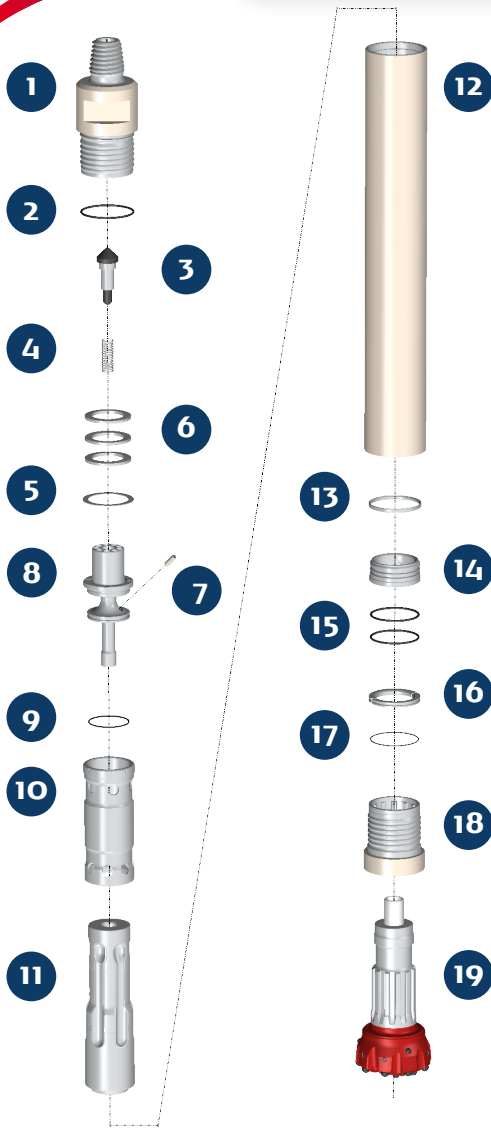


PUMA M6.2 QL 6

HAMMER TYPE / S (Standard) CODE / 0006060-000034



SPARE PARTS

ITEM / DESCRIPTION	kg /	lb	CODE
1 Backhead 3 1/2" Reg. Pin ⁽¹⁾	17.7	38.9	0106060-010008
2 Backhead O'Ring	0.0	0.0	C180010-002349
3 Check Valve Dart	0.4	0.9	0101050-030000
4 Check Valve Spring	0.1	0.1	0101060-040000
5 Make Up Ring Shim ⁽²⁾	0.1	0.1	0101060-180000
6 Compression Disk (Qty:3)	0.8	1.7	0106060-060003
7 Choke ⁽³⁾	0.0	0.0	0101050-070000
8 Air Guide	4.3	9.5	0106060-080002
9 Air Guide O'Ring	0.0	0.0	C180010-002238
10 Cylinder	4.4	9.7	0106060-100003
11 Piston QL 6	22.0	48.4	0106060-120009
12 Wear Sleeve	32.4	71.2	0106060-110005
13 Piston Retainer Ring	0.1	0.1	0101060-130001
14 Bit Guide QL 6	1.3	2.9	0106060-140003
15 Bit Guide O'Ring (Qty:2)	0.0	0.0	C180010-002346
16 Bit Retainer QL 6	0.4	0.9	0106060-150004
17 Bit Retainer O'Ring	0.0	0.0	C180010-002156
18 Chuck QL 6	5.1	11.2	0106060-170016
19 Bit QL 6	-	-	-

(1) Other thread types can be delivered at request.
 (2) Not installed in new hammers.
 (3) Different Choke size are available.

GENERAL DESCRIPTION

NET WEIGHT		OUTSIDE DIAMETER		HAMMER LENGTH		HAMMER LENGTH WITH BIT						
						CLOSED BIT		EXTENDED BIT				
kg	lb	mm	in	mm	in	mm	in	mm	in			
89	196	141.5	5.57	1098	43.2	1201	47.2	1241	48.8			
PRESSURE	psig	150	200	250	300	350	barg	10.3	13.8	17.2	20.7	24.1
VOLUME	SCFM	290	450	610	760	895	m³/min	8.2	12.7	17.3	21.5	25.3

Check. 09/2016